

**A SCOPING REVIEW ON NUTRITIONAL, PHYTOCHEMISTRY,
PHARMACOLOGICAL ASPECTS, MEDICINAL APPLICATION AND TECHNICAL
KNOWLEDGE ON THE NATURAL RESINS****Dr. Ankit Jain and Nidhi Somkuwar***

Research Guide, Research Scholar, Pharmacology, IPS Academy College of Pharmacy, Indore-452012 (M.P.) India.

***Corresponding Author: Nidhi Somkuwar**

Research Guide, Research Scholar, Pharmacology, IPS Academy College of Pharmacy, Indore-452012 (M.P.) India.

Article Received on 31/03/2025

Article Revised on 21/04/2025

Article Accepted on 11/05/2025

ABSTRACT

Natural resins, a diverse class of plant-derived substances, have garnered increasing attention due to their nutritional, phytochemical, pharmacological, and medicinal properties. This scoping review aims to comprehensively explore the multifaceted aspects of natural resins, focusing on their nutritional value, chemical composition, therapeutic potential, and technical applications. Resins from conifers often include resin acids, a mixture of diterpenic organic carboxylic acids. This study systematically analyze the phytochemical constituents of various natural resins, highlighting key bioactive compounds such as terpenoids, alkaloids, flavonoids, and phenolics, which contribute to their pharmacological activities. In terms of medicinal applications, these resins have shown promising effects in the treatment of ailments ranging from inflammation and infections to digestive and respiratory disorders. Furthermore, the review delves into their utilization in traditional and modern medicine, including their role in wound healing, antimicrobial treatments, and as anti-inflammatory agents. The technical knowledge regarding the extraction, and optimization of resin-based products is also discussed to provide insights into their industrial and therapeutic applicability. Through this review, we aim to consolidate existing knowledge on natural resins and highlight their potential for future research and development in both medical and industrial sectors.

KEYWORDS: Natural Resins, Oleo gum Resins, Phytochemistry, Pharmacological Properties.**INTRODUCTION**

Non-wood forest products (NWFPs) are classified according to their chemical composition as natural resins, natural gums, or gum resins. Natural resins are solid or semi-solid substances that often include a complex combination of chemical components known as terpenoids. These compounds are typically insoluble in water but can dissolve in certain organic solvents. Resins are released by numerous plants, especially coniferous trees, and are used to produce varnishes, adhesives, and food glazing agents.^[1]

India is home to many tree species that generate gums and resins. Some of these are of local or limited relevance, others are widely utilized throughout the country and have also found their way into the export market. Gum karaya, gum ghatti, salai gum, guggul, and gums from various *Acacia* species, such as Indian gum Arabic from *Acacia nilotica* and real gum Arabic from *Acacia senegal*, are examples of commercially valuable gums and gum-resins produced from woodlands. Key commercial resins come from groups such as Pinaceae (rosin, amber), Leguminosae (copal), and

Dipterocarpaceae (dammar). The United States Food and Drug Administration has approved several natural gums and resins for use in food and medicinal goods. There is no known allergies associated with natural resins. Today, natural gums and resins are widely utilized across various manufacturing sectors, including the food and pharmaceutical industries, for numerous applications.^[2]

Resins are oxidation products derived from various essential oils, exhibiting a complex and diverse chemical makeup. They are typically secreted in specific cavities or channels within plants, often oozing through the bark and hardening when exposed to air. In many cases, tapping the tree is necessary to obtain commercially viable amounts of resin. Commercial resins can also be extracted from fossil sources. Resinous substances can exist alone or in conjunction with essential oils or gums. Resins, unlike gums, are insoluble in water but readily dissolve in solvents like ether and alcohol.

Resins possess unique properties that make them valuable in industry. Their gradual hardening as the contained oils evaporate is essential for producing

varnishes. When resins are dispersed in solvents and applied to surfaces, evaporation of oils and solvents leaves a thin, waterproof resin layer. This has made resins useful for waterproof and decorative coatings throughout history. Another industrially important property of resins is their solubility in alkalis, allowing them to be used in soap production. Additionally, resins find applications.^[3] Resins are oxidation products derived from various essential oils, exhibiting a complex and diverse chemical makeup. They are typically secreted in specific cavities or channels within plants, often oozing out through the bark and hardening when exposed to air. In many cases, tapping the tree is necessary to obtain commercially viable amounts of resin. Commercial resins can also be extracted from fossil sources. Resinous substances can exist alone or in conjunction with essential oils or gums. Resins, unlike gums, are insoluble in water but quickly dissolve in solvents such as ether and alcohol.

Resins possess unique properties that make them valuable in industry. Their gradual hardening as the contained oils evaporate is essential for producing varnishes. When the resins are dissolved in solvents and applied to surfaces, evaporation of oils and solvents leaves a thin, waterproof resin layer.^[4]

The main characteristics of resins are as follows.

- They do not dissolve in water.
- They dissolve in ordinary solvents including alcohol, ether, and turpentine.
- Resins are brittle, amorphous, and either clear or semi-transparent.
- They have a peculiar shine, are often fusible, and emit a smoky flame when burnt.^[5]

Gum-resins: Gum-resins are natural combinations of gum and resin that display the properties of both. They include modest amounts of essential oils and color pigments and are frequently secreted by plants in arid regions. The most often used gum-resin comes from the *Boswellia serrata* tree, also known as salai guggul.

Oleo-gum resins: Oleo-gum-resins are semi-solid plant extracts made up of a homogenous mixture of volatile oil, gum, resin, and trace amounts of other ingredients. Oleo-gum resins include guggul and asafoetida. Natural resinous gums (NRGs) have numerous applications in medicine, as well as in meeting socio-cultural, spiritual, and health demands in communities. Locals employ medicinal formulations created from tree gums and resins to treat injuries, neurological problems, and a variety of other ailments.^[6]

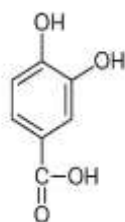
Table 1: Essential resins and gums used in traditional medicine.

S. no.	Plant name	Family	Common name	Part used	Ailment cured
1.	Kerria lacca	Tachardiidae	Lac insect	Resin	Dysentery, diarrhea, internal bleeding issues, intestinal parasites, cough, hiccups, jaundice, obesity, skin diseases, leprosy, kidney and spleen abnormalities, back discomfort, joint troubles, ulcers, epilepsy, and chicken pox.
2.	Canarium strictum	Sapindaceae	Black dammar	Resin	Dysentery and Diarrhoea.
3.	Shorea robusta	Dipterocarpaceae	Sal	Resin	Itching and rashes, excessive sweating, aggravated pitta-related Wounds, ulcers, nerve pain, burns, itching (pruritus), fractures, fever, diarrhea, dysentery, hemorrhoids, gonorrhea, heavy menstrual bleeding (menorrhagia), enlargement of the spleen, obesity, headaches, toothaches, burning sensation in the eyes, and eye pain.
5.	Vateria indica	Dipterocarpaceae	White dammar	Resin	Cough, chronic bronchitis, throat difficulties, skin rashes, leprosy, cracked skin infections, ulcers and sores.
6.	Gardenia resinifera	Rubiaceae	Dikamali	Resin	Headache, runny nose, intestinal parasites, abdominal bloating, and hemorrhoids.
7.	Pinus spp.	Pinaceae	Chir, Blue, and Khasi pines	Resin	Wounds, bloat
8.	Boswellia serrata	Burseraceae	Indian frankincense	Gum-resin	Rheumatoid arthritis, asthma, inflammatory bowel disease, and skin diseases.
9.	Commiphora wightii	Burseraceae	Guggul	Oleo-gum resin	Joint pain, blood clots, persistent bronchitis, cystic acne, swollen gums, and tooth decay.
10.	Convolvulus scammonia	Convolvulaceae	Sakmonia	Gum-resin	Dropsy

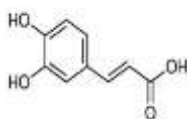
Sal Tree (*Shorea robusta*), Indian Frankincense (*Boswellia serrata*), Indian Bdellium Tree (*Commiphora wightii*), Neem Tree (*Azadirachta indica*), Indian Copal Tree (*Vateria indica*), Pine Trees (*Pinus* species), Ailanthus Tree (*Ailanthus triphylla*), Indian Myrrh Tree (*Commiphora myrrha*), Sandalwood Tree (*Santalum album*), Acacia Trees (*Acacia seyal* and *Acacia senegal*) are the primary species in the country known for producing gums and resins. Copal, Dammar batu, Gum rosin, Lac, Mastic gum, Asafoetida, Myrrh, Olibanum or frankincense.^[7] Nutritional, Phytochemistry, Pharmacological aspects, Medicinal Application and Technical Knowledge on all the Resins.

- **Acacia seyal:** The genus *Acacia* (commonly referred to as wattles) includes a vast variety of shrubs and trees that are members of the subfamily Mimosoideae within the pea family (Fabaceae). These plants are native to tropical and subtropical regions across the globe.^[8]

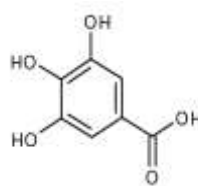
Acacia seyal is a renowned traditional medicinal plant with different therapeutic benefits, due to its various phytoconstituents present in both its organized portions, such as fruits, bark, stem, and roots, and unorganized parts, like gum acacia, also known as "taleh" or "talha gum."^[9]



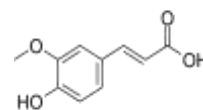
3,4-dihydroxybenzoic acid



Caffeic acid



Gallic acid



Ferulic acid

Pharmacological aspects of Acacia: *Acacia* species' pharmacological qualities have been widely explored. Secondary metabolites from these species display different biological properties, including antibacterial, antifungal, antioxidant, anticancer, antiparasitic, antidiabetic, immunomodulatory, and cytotoxic effects.

Nutritive Value: *Acacia seyal* gum primarily consists of a complex polysaccharide with a minor proportion of nitrogenous compounds, including proteins. While its nutritional value as a digestible polysaccharide is low, it is highly valued for its significant content of soluble dietary fibers. These polysaccharides have little caloric value and are resistant to digestion by digestive enzymes, making them beneficial for dietary fiber intake.^[10] *Acacia seyal* gum's soluble dietary fibers inhibit sugar and fat absorption, which contributes to its antihyperglycemic and antihyperlipidemic properties.^[11]

- **Indian Bdellium Tree (*Commiphora wightii*)**
Commiphora wightii, also known as the Indian bdellium tree, Gugal, Guggul, or Guggulu, is a flowering plant in



Figure 1: Acacia Seyal Resins.

Main Phytoconstituents

The chemical composition of *Acacia seyal*, including its primary phytoconstituents, has been documented in previous studies. This composition can vary based on factors such as the tree's geographical origin, age, climate, and soil conditions. *A. seyal*'s leaves, flowers, and pods contain high levels of phytochemicals such as proteins, saponins, phenolics, flavonoids, anthocyanins, and carbohydrates. Notably, the bark extract lacked alkaloids and anthraquinones. Other investigations have discovered flavonoids, saponins, terpenoids, steroids, alkaloids, phenols, coumarins, and tannins in stem bark. The leaves of *A. seyal* also contain phenolic acids such as gallic acid, salicylic acid, p-coumaric acid, caffeic acid, 3,4-dihydroxybenzoic acid, and ferulic acid.^[8]

the family Burseraceae. While it is found throughout northern Africa and central Asia, it is most common in northern India. This plant thrives in dry and semi-arid locations and may grow even in poor soil conditions.

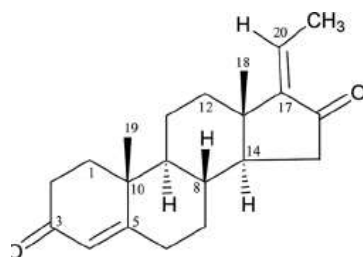
It is a shrub or small tree that can grow to be up to 3 meters tall and has thin, papery bark. *C. wightii* produces a resinous substance called gum Guggul, and its extract—known as gugulipid or guglipid—is frequently utilized in Ayurvedic medicine. The plant's composition includes essential oils, resin, gum, and bitter compounds.



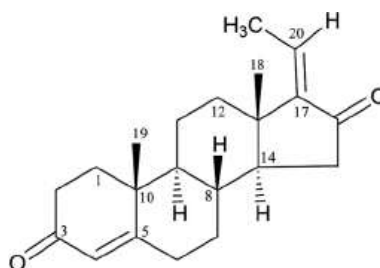
Fig 2: Commiphora wightii.

Chemical Constituents: Volatile oil containing myrcene, dimyrcene, and polymyrcene; resin (Z-

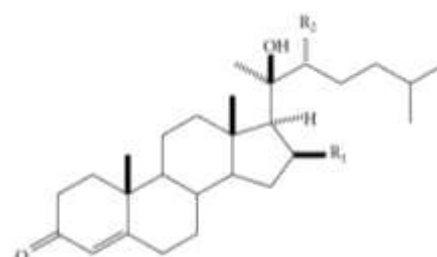
Guggulsterone, E-Guggulsterone, Z-Guggulsterol, and Guggulsterol I–V).^[12]



Z-Guggulsterone



E-Guggulsterone



Guggulsterol I

Nutritive Value: Guggul is an oleo gum resin obtained from the Burseraceae family plant, *Commiphora wightii*. It is composed of 61% resin, 29.3% gum, 0.6% volatile oils, 6.1% moisture, and 3.2% impurities.^[13]

Chemical composition of Guggul: Guggul gum contains 61% resin, 29.3% gum, 6.1% water, 0.6% volatile oil, and 3.2% foreign materials. Derived from the gum-resin exudate of the plant *Commiphora mukul*, it is a complex mixture that includes steroids, diterpenoids, aliphatic esters, carbohydrates, various inorganic ions, and small amounts of sesamin, along with other unidentified components.^[14]

Pharmacological Activity

Guggul's pharmacological properties have been extensively studied for decades, with ongoing research since 1979. Over the years, it has shown effectiveness in addressing a wide range of health conditions. Guggul is reported to help cure nervous system problems, hemiplegia, leprosy, marasmus, muscle spasms, neuralgia, ophthalmia, pyelitis, pyorrhea, scrofula, skin ailments, spongy gums, ulcerative pharyngitis, hypertension, ischemia, hemorrhoids, and urinary tract infections.

Its antioxidant properties have an important role in suppressing cholesterol oxidation, avoiding arterial hardening, reducing platelet stickiness, and lowering the risk of coronary artery disease. Furthermore, guggul enhances the elimination of bile acids (cholic and deoxycholic acids) and cholesterol through feces while reducing the intestinal absorption of fats and cholesterol.^[15]

➤ Indian Copal Tree (*Vateria indica*)

This tree species is slow-growing and typically found in the canopy or emergent layer of evergreen forests at low to medium altitudes. It has smooth bark in shades of gray, with stems and trunks displaying a blend of green, gray, and white. The plant is notable for its dense foliage and fragrant white flowers, which attract honey bees for pollination. Found throughout Kerala, this genus is highly valued for its durable timber. Furthermore, its resin is prized for its medicinal tonic and expectorant properties, as well as its role in producing adhesives.



Fig 3: Vateria indica Resins.

Chemical Constituents

The leaves and roots of *Vateria indica* are rich in bergenin and hopeaphenol, while the bark contains bioactive components include oligostabinoids and monoterpenes. The resin contains a complex mixture of triterpenes, hydrocarbons, ketones, alcohols, acids, and trace amounts of sesquiterpenes. The outer layer of the plant (epicarp) is notable for its high tannin content, around 25%. Commonly known as pine fat or dhupa fat, *Vateria indica* produces dhupa oil, which contains more than 55% saturated fatty acids and solidifies at lower temperatures, resembling a fat-like texture.

The dhupa nut contains 19-23% fat, which results in a light-yellow material with a tallow-like consistency that whitens with time. The main fatty acids found in dhupa fat are stearic acid (38-47%), oleic acid (38-48%), and palmitic acid (up to 95%). In addition, the seeds contain bergenin. The phenolic components of *Vateria indica* have identified five tetramers: resrarol, *Vateria* phenol B and C, isohopéphanol, Espoir phenol, and coast.^[16]

Pharmacological Activity

Pharmacological properties of *Vateria indica* evaluate the anti-inflammatory effects of *Vateria indica* leaves. The plant is also used to treat worms, ulcers, and inflammation. Furthermore, the stem bark of *Vateria indica* demonstrates substantial antitumor potential, and the plant is recognized for its overall anticancer characteristics.^[17]

➤ Indian Myrrh Tree (*Commiphora myrrha*)

The *Commiphora* species are tiny trees or shrubs with rough, thorny branches. True myrrh is largely derived from the *Commiphora myrrh* plant, which is endemic to southern Arabia, northeastern Africa (particularly

Somalia), and northeastern Kenya. Other resin-producing *Commiphora* species can be found in Sudan, southern Arabia, Eritrea, Kenya, Ethiopia, and Somalia. *Commiphora* species are little trees or shrubs with spiky branches and bark that emits a pale gray discharge or reddish-brown resin.



Fig 4: *Commiphora myrrha* Resins

Myrrh: Myrrh is an oleo-gum resin derived from various *Commiphora* species. Its composition includes 3–4% impurities, 7–17% volatile oils, 25–40% alcohol-soluble resins, and 57–61% water-soluble gum. The alcohol-soluble components of myrrh resin include commiphorinic acids, commiphoric acids, commiferin, heerabomyrrhols, and heeraboresene.^[18]

Phytochemical Constituents

Volatile Oil (7–17%)

Contains components include cuminic aldehyde, eugenol, meta-cresol, pinene, limonene, diterpenes, and two sesquiterpenes.

Resin (25–40%)

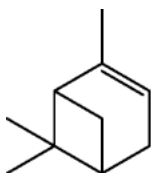
- The ether-soluble portion contains α , β , and γ commiphoric acids, esters of another resin acid, and two phenolic resins.
- Ether-Insoluble Portion: Composed of α and β heerabomyrrholic acids.

Gum (57–61%)

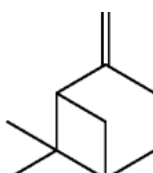
Associated with the enzyme oxidase and hydrolyzes to produce arabinose.

Essential Oil of *Commiphora*

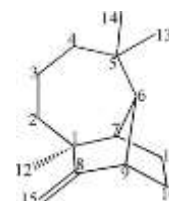
Contains nine sesquiterpene hydrocarbons, elemol (a sesquiterpene alcohol), and furanosesquiterpenoids including furanodiene, furanodienone, isofuranogermacrene, curzerenone, and lindrestene. Includes 3–4% impurities.



α -pinene



β -pinene



β -longifolene

- **Pharmacological Activity**
- *P. roxburghii*'s wound healing activity was investigated, while methanol and aqueous extracts of

Pharmacological Activity

Myrrh's effects include creating muscle, decreasing swelling, relaxing discomfort, and dispersing stasis. It is used to treat rheumatic arthralgia, postpartum stasis, dysmenorrhea, gynecological benign tumors, trauma, abscess, swelling, and wounds, as well as chest arthralgia and grief.^[19]

➤ Pine Trees (*Pinus* species)

Pinus roxburghii Sarg. (Pinaceae), popularly known as chir pine, is a tall tree with a spreading crown that grows in the Himalayas from Kashmir to Bhutan, Afghanistan, and the highlands of southern India.

It is also grown for aesthetic purposes in gardens. Tapping the stem produces a transparent, translucent oleo-resin with a strong, bitter flavor. The distillation of turpentine oil from oleo-resin leaves yields a translucent, slightly aromatic rosin (colophony). It is used in the manufacturing of fireworks, insecticides, and disinfectants. It also finds its way into some lubrication solutions, hair fixants, and nail polishing solutions. It frequently causes contact allergies, although it is also used to make ointments, plasters, and a variety of other items like chewing gum, polishes, and varnishes.^[20]



Fig 5: *Pinus roxburghii* Resin.

Phytoconstituents

The oil consists of α -limonene, α -phellandrene, borneol, longifolene, and α -cadinene. Chir oleoresin is the primary source of turpentine oil in the country. The normal composition consists of α -pinene (20–30%), β -pinene (5–10%), β -3-carene (55–65%), and longifolene and other terpenes (2–10%). β -carene, β -longifolene, and longicycline have also been detected. Additionally, the bark contains 7–10% tannins.^[21]

P. longifolia leaves were tested for wound healing activities on excision and incision wound models.

Additionally, their cytotoxicity, antimicrobial, and antibacterial properties were evaluated.^[20]

➤ Sandalwood Tree (*Santalum album*)

The plant was primarily used to generate aromatic sandalwood oil by steam distillation. A little, glabrous, evergreen tree with slender, drooping branches produces odorless, white sapwood. The yellowish brown heartwood has a strong odor. The elliptic lanceolate, subacute glabrous, entire thin base sharp leaves are 3.8 to 6.3 by 1.6 to 3.2 cm long. The petioles are 1 to 1.3 cm long. The thin, reddish purple indurated flowers grow in terminal and auxiliary panicle cymes that are shorter than the leaves. 4 rounded obtuse scales alternate with 4 perianth campanulate limbs, 4 valvate triangular segments, and 4 stamens.

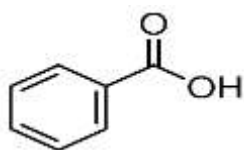
Globose-shaped, measuring 1.3 cm in diameter. Purple-black endocarp; hard-ribbed fruit conelae, pea-sized, spherical, crowned with rim-like remnants of the perianth tube, smooth, nearly black, bearing a solitary seed.



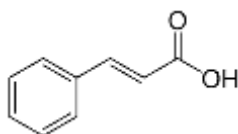
Fig 6: *Santalum album* Resins.

Phytoconstituents

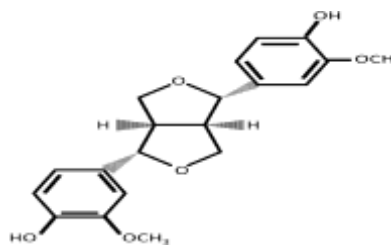
The oil's major constituent, santalol (90 percent or more), is a blend of two main sesquiterpene alcohols, C₁₅H₂₄O, notably α -santalol (bp-166- β -santalol (b.p-177-1780C), where the α -form is more abundant, and 1670C). (1, 3). Sandalwood oil has approximately a hundred components classified as tannins, terpenes, resins, and waxes. These include the hydrocarbons santene (C₉H₁₄), nortricyclo-ekasantalene (C₁₁H₁₈), α - and β - santalenes (C₁₅H₂₄), alcohols-santenol (C₉H₁₆O), teresantalol (C₁₀H₁₆O), aldehydes-nortricyclo-kasantalal (C₁₁H₁₆O), 3, 7, 8, and acids α - and β - santalic acids (C₁₅H₂₂O₂) and teresantallic acids (C₁₀H₁₄O).



Benzoic acid



Cinnamic acid



Pinoresinol

Pharmacological Activity

Antibacterial Activities of oil & bark, Skin cancer- and chemo preventive efficacy of α Santalol, Antioxidant activity, Anti-ulcerogenic activity.^[22]

➤ Benzoin Resin (*Styrax benzoin*)

There are various names for styrax benzoin depending on where you live. Benzoin trees, benzoin resins, and sumatra benzoin are some of the common names for *Styrax benzoin*. The plant, which can be either a shrub or a tree, is about 25 meters long, 30 centimeters in diameter, and has simple, hairy, dark green leaves with white flowers. Since ancient times, people have been familiar with the scent of benzoin resins, which are employed as perfumes or medicines in all cultures worldwide.

The resin varies greatly between species and cultivars and is believed to be influenced by a variety of factors, including genetics, growing conditions, geographic origin, distinct chemotypes, and variations in the plants' nutritional state.

Styrax benzoin resins are made by tapping the bark, which takes 15 to 20 years to create. When obtained, styrax benzoin resins are yellow, but when they thicken and harden, they turn reddish-brown.



Fig 7: *Styrax benzoin* Resin

Phyto-chemistry: The presence of vanilline gives styrax benzoin a vanilla-like aroma. *Styrax benzoin* is used to produce trans-coniferyl alcohol benzoate or trans-p-cumaryl alcohol. *Styrax benzoin* contains several chemicals, including cinnamic acid, benzoic acid, methyl cinnaminate, coniferyl benzoate, cinnamic acid, phenylethylene, and vanillin.

Pharmacological Activity

Phytotherapy in dermatology: Dermatology using phytotherapy. The process of repairing plant-based medications and using them to treat skin conditions is known as phytotherapy in dermatology. Both skin conditioning and skin toughening are accomplished using benzoin.

Issues with the respiratory system: Numerous respiratory issues exist, including aspiration, obstructive sleep apnea, asthma, pneumonia, and chest infections.

A diuretic: Kidney disorders, heart failure, cirrhosis, nephritic syndrome, and excess extracellular fluid are all typical symptoms of diuretic disease.^[23]

➤ Lac Resin (Shellac)

Schleichera is a monotypic genus of plants in the Sapindaceae family. *Schleichera oleosa*, or Kusum, is a tree endemic to the Indian subcontinent and Southeast Asia. This plant has been used for a variety of purposes since ancient times. Its leaves, twigs, and seed cake are used as bovine fodder, and its wood is useful for fuel and charcoal production. Additionally, the seeds produce an oil called "kusum oil."

The pinkish-brown heartwood is exceptionally hard and robust, making it perfect for constructing pestles, cartwheels, axles, plows, tool handles, and rollers for sugar mills and oil presses. In India, the tree is also a host for the lac bug (*Laccifer lacca*).^[24]



Fig 8: Lac Resin.

Phytochemical constituents

The leaves are high in gallotannic acid, crude proteins, calcium, and phosphorus. The bark contains tannins, pigments, and resins. The seeds, known for their high oil content (58-60%), create "macassar oil," which contains cyanogenic glucosides that are harmful to humans. As a result, the oil must be adequately filtered before usage. The seed oil contains 13-19% fatty acids, such as palmitic acid, myristic acid, eicosenoic acid, eicosadienoic acid, erucic acid, stearic acid, oleic acid, arachidic acid, gadoleic acid, behenic acid, and palmitoleic acid. Oleic acid content ranges from roughly 50% to 2.83-3%.^[25]

Pharmacological Activity

Plants exhibit significant potential in various therapeutic roles, including antioxidant and anti-inflammatory activities. They also serve as promising antimicrobial

agents and demonstrate effectiveness in anti-arthritic applications.^[26]

➤ Indian Frankincense (*Boswellia serrata*)

Boswellia serrata Roxb., commonly known as Kundur, is a stem exudate derived from the oleogum resin of *Boswellia serrata*, a member of the Burseraceae family. The genus *Boswellia* comprises approximately 25 recognized species, predominantly found in Arabia, the northeastern coast of Africa, and India. *Boswellia glabra* Roxb. is considered a synonym for *Boswellia serrata*. When the tree is wounded, it secretes salai guggul, a type of oleo gum resin. It is the only non-coniferous source of turpentine and rosin in India. The resin, also termed olibanum, appears as semi-transparent pinkish tears, which are brittle when cold but turn greasy and malleable when heated.^[27]



Fig 9: *Boswellia serrata* Resin.

Phytochemical constituents: The alcoholic extract of Salai guggul (AESG) was shown to have anti-inflammatory and anti-arthritic properties. Boswellic acids inhibit leukotriene synthesis through a non-redox, non-competitive mechanism that targets the 5-lipoxygenase (5-LOX) enzyme. Salai guggul contains roughly 8-9% essential oil, 20-23% gum, and about 50% resin. The methanol extract of *Boswellia serrata* resin yielded a new lupane triterpene as well as boswellic acids. Purification of the fraction using a 1:1 combination of ethyl acetate and hexane led to extraction of 3 α hydroxylup-20(29)-ene-24-oic acid.^[28]

3 α hydroxylup-20(29)-ene-24-oic

Pharmacological Activity

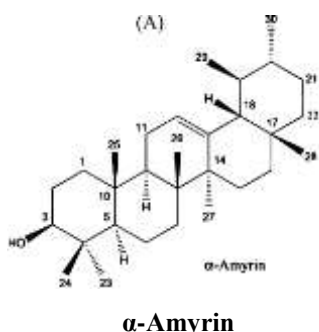
The essential oil of Indian frankincense exhibits a broad range of pharmacological activities, including anticancer, antimicrobial, psychotropic, antiulcer, and antioxidant properties. Its potential to modulate antibiotic resistance addresses one of the critical challenges in modern medicine—bacterial resistance to antibiotics. Additionally, it demonstrates antitumor, antimicrobial, antimalarial, antifungal, and neuroprotective effects.^[29]

➤ *Canarium strictum* (Black dammar):

C. strictum produces a resin called 'black dammar,' locally referred to in India by the numerous names include mand dhuup, raal dhuup, karunkungiliyam, and sambrani.^[30] The term "dammar" comes from Malay and refers to many types of resins. In taxonomy, various taxa have been named after dammar, including the coniferous

genus *Dammara*, which obviously refers to trees that produce resin. However, recent taxonomic revisions reallocated species from the genus *Dammara* to *Protium* Burm.f. (Burseraceae), *Shorea* Roxb. ex C.F.Gaertn. (Dipterocarpaceae), and *Agathis* Salisb. (Araucariaceae), including the resin-producing tree *Agathis dammara* (Lamb.) Rich. This has caused some misunderstanding with the vernacular name "dammar." The resin of *C. strictum* is dark brown, which is possibly why it is termed "black dammar."^[31]

The resin of *C. strictum* does not spontaneously leak from the bark; instead, the tree must be incised to induce its production. This resin has long been used to treat rheumatism, asthma, sexual infections, and chronic skin ailments like as psoriasis and pityriasis. It is also used as a liniment for rheumatic conditions.



Pharmacological Activity

Crude drugs derived from *Canarium L.* exhibit a variety of medicinal qualities, including anti-inflammatory, antibacterial, antifungal, anticancer, hepatoprotective, antioxidant, and antidiabetic actions. Black dammar resin is derived from the damaged bark of *Canarium strictum*. This plant holds significant medicinal and economic value in various traditional medicine systems in India. Traditionally, the decoction or dried resin powder has been administered orally to treat conditions such as skin infections, hernias, syphilis, epilepsy, asthma, fever, and rheumatism. The resin can also be used to replace burgundy pitch in plaster production and to cure psoriasis and pityriasis on the skin. Furthermore, the resin is said to have analgesic and anti-inflammatory qualities.^[33]

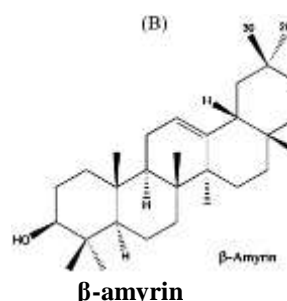
➤ *Convolvulus scammonia* Resins

Plants produce a large number of secondary metabolites, which are biosynthetically produced from primary metabolites and are an important source of pharmaceutical medications.^[34] Field bindweed is a perennial vine that grows 0.4 to 2 inches tall and has deep, spreading roots. Its leaves, which are typically dull green with obvious veins, vary greatly in shape—usually arrowhead-shaped (hastate or sagittate), but often round, ovate, oblong, or linear, depending on environmental conditions. Stems are thin, hairless or slightly hairy vines measuring 1-6 feet long that form dense mats or climb objects. Flowers are funnel-shaped, 2-2.5 cm long, and



Fig 10: *Canarium strictum* Resins.

Phytochemistry: α -Amyrin and β -amyrin were isolated and identified from the crude extracts of *C. strictum* resin. These two compounds were responsible for the prominent signals observed in the spectrum of the DCM crude resin extract, as reported in studies on *C. strictum*. GC-MS analysis further confirmed that α - and β -amyrin are the primary constituents of the resin.^[32]



have white or pale pink petals. The pistil is compound and has two stigmas. Fruits are spherical, light brown, and normally contain two seeds, however 1-4 seeds are common, with the occasional exception.^[35,36]



Fig 11: *Convolvulus scammonia* Resins.

Phytochemistry: The root contains approximately 8% resin, dihydroxy cinnamic acid, beta-methyl-esculetin, ipuranol, sucrose, a reducing sugar, and starch. The resin is made up of glycosides and methyl pentosides produced from jalapinic acid and its methyl ester. The primary active compound is the glucoside scammonin, also known as jalapin, with the chemical formula $C_{34}H_{114}O_6$. The root of scammony is rich in bioactive components, with resin and glycosides, collectively referred to as Scammonin, being the key active substances in convolvulaceous plants. Acid hydrolysis of the ether-soluble resin extracts produces glucose and hydroxyfatty acid ($C_{16}H_{32}O_3$). Meanwhile, the ether-insoluble resin extract yields there are seven organic

acids (acetic, propionic, isobutyric, isovaleric, 2-methylbutyric, n-valeric, and tiglic acids), as well as two hydroxyfatty acids (ipurolic acid and rhamnase). In contrast, jalapin, an ether-soluble resin, creates comparable organic acids, monosaccharides, and one hydroxyfatty acid called jalapinolic acid.^[37]

Pharmacological Activity: Herbal medicine is the oldest form of treatment known to humanity. It served as the foundation for many ancient civilizations and remains the most commonly practiced form of medicine worldwide. Plants exhibit a broad spectrum of pharmacological activities, including antimicrobial, antioxidant, anticancer, hypolipidemic, cardiovascular, central nervous system, respiratory, immunological, anti-inflammatory, analgesic, antipyretic, and numerous other therapeutic effects.^[32]

➤ *Gardenia Resinifera*

Dikamali, a plant endemic to peninsular India, develops small leaves and secretes a sticky material from the tips of its leaves and new shoots, known as dikamali or cumbi-gum. Traditionally, the resin is warmed in coconut oil and applied to the forehead and throat to relieve headaches. It also acts as an antihelmintic agent. When heated in oil, the vapors are inhaled to treat a runny nose. Additionally, the resin has antibacterial qualities.^[38,39] The resin of the plant *Gardenia resinifera* is diluted in water and administered to patients to cure abdominal distension and piles. It is also given in tiny dosages to youngsters suffering from intestinal worms.^[40]



Fig 12: *Gardenia resinifera* Resin.

Phytochemistry

Phytochemical compounds, including phenols, flavonoids, alkaloids, and other secondary metabolites, exhibit both nutritional and pharmacological properties. It also acts as an antihelmintic agent. When heated in oil, the vapors are inhaled to treat a runny nose. Additionally, the resin has antibacterial qualities.^[38,39] The resin of the plant *Gardenia resinifera* is diluted in water and administered to patients to cure abdominal distension and piles. It is also given in tiny dosages to youngsters suffering from intestinal worms.^[41]

Pharmacological Activity

Gardenia is widely used to treat a variety of illnesses, including bladder infections, abscesses, jaundice, and the presence of blood in urine, stool, or sputum. It also effectively manages anxiety, insomnia, and symptoms

related with hormonal imbalances, such as depression, nervous tension, dizziness, and headaches.^[42] This plant includes a variety of chemical substances, including methyl 7-keto-octadec-cis-11-enoic acid, dikamaliartanes A–F, Gardenin A, B, D, E, 5-Desmethylnobiletin, Xanthomicrol, and Acerosin.^[43,44]

Gardenia resinifera has been reported to exhibit several notable pharmacological properties, including antispasmodic, expectorant, antimicrobial, and anthelmintic effects.^[45,46,47] It also has anti-epileptic, antipyretic, and anticonvulsant properties, as well as antiproliferative effects on lung, breast, colon, hepatic, and leukemia cell lines.^[48,49,50]

CONCLUSION

This scoping review emphasizes the incredible diversity and medicinal value of various natural resins. Each type of resin, distinguished by its unique phytochemical composition—including terpenoids, flavonoids, and phenolic compounds—exhibits distinct pharmacological properties, such as antibacterial, anti-inflammatory, antioxidant, and anticancer activities. The review highlights their enduring significance in both traditional and modern medical practices, demonstrating their pivotal role in healthcare and industry. Moreover, advancements in extraction techniques and formulation technologies have further expanded their applications in pharmaceuticals, cosmetics, and other technical fields. However, challenges remain, including the need for a deeper understanding of the molecular mechanisms specific to certain resin types, the development of standardized extraction and quality control methods, and the implementation of sustainable harvesting practices to preserve ecological balance. Future research should focus on integrating traditional knowledge with scientific advancements, promoting interdisciplinary approaches to fully harness the potential of various natural resins. Such efforts will not only enhance their applications but also ensure sustainability and equitable access to these valuable resources.

REFERENCES

1. Yogi RK, Yadav SK, Sharma SC, Thobhare N, Pal G. Value Chain Of Natural Resins In India. Associate Editor-In-Chief, 20.
2. Sharma K K, Monobrullah Md, Mohanasundaram A and Ramani R. 2016. Beneficial Insect Farming - Benefits and Livelihood Generation. ICAR-Indian Institute of Natural Resins & Gums, Ranchi (Jharkhand), India, 120 pp.
3. Srivastava S, Chowdhury AR, Thombare N. Quality requirement and standards for natural resins and gums. International Journal of Bioresource Science, 2016; 3(2): 89-94.
4. Suthari S, Kanneboyena O, Kiran E, Naidu MT, Rao AR. natural Gum and resin Bearing Plant taxa in telangana, India: A Qualitative Method of data collection. Journal of Plant Science Research, 2023 Jul 1; 39(2).

5. Yogi RK, Kumar A, Singh AK, Yadav SK, Jaiswal AK. Natural Resins and Gums: Agribusiness Modules for Skill and Entrepreneurship Development.
6. Thombare N, Kumari U, Sakare P, Chowdhury AR, Lohot VD, Prasad N. Indigenous technical knowledge on the medicinal uses of natural resins and gums in India. *Indian Journal of Traditional Knowledge (IJTK)*, 2023 Jun 28; 22(2): 340-9.
7. Tadesse W, Desalegn G, Alia R. Natural gum and resin bearing species of Ethiopia and their potential applications. *Forest Systems*, 2007 Dec 1; 16(3): 211-21.
8. Ashour MA, Fatima W, Imran M, Ghoneim MM, Alshehri S, Shakeel F. A review on the main phytoconstituents, traditional uses, inventions, and patent literature of gum Arabic emphasizing *Acacia seyal*. *Molecules*, 2022 Feb 9; 27(4): 1171.
9. Thiele KR, Funk VA, Iwatsuki K, Morat P, Peng CI, Raven PH, Sarukhán J, Seberg O, McNeill J, Orchard AE, David JC. The controversy over the retypification of *Acacia* Mill. with an Australian type: a pragmatic view. *Taxon*, 2011 Feb; 60(1): 194-8.
10. Schneeman BO. Dietary fiber: comments on interpreting recent research. *Journal of the American Dietetic Association*, 1987 Sep; 87(9): 1163.
11. Ushida, K. Gum Arabic and its anti-obese effect. In *Gum Arabic*; Kennedy, J.F., Phillips, G.O., Williams, P.A., Eds.; The Royal Society of Chemistry: Cambridge, UK, 2012; pp. 285–290.
12. Rani R, Mishra S. Phytochemistry of guggul (*Commiphora wightii*): A review. *Asian Journal of Research in Chemistry*, 2013; 6(4): 415-26.
13. Zaid Ahmad1, Madhvi Bhardwaj2, and Anupam Kumar1 * Phytochemical Analysis and Antimicrobial Activity of *Commiphora wightii* Plant (Guggul) Extract. *Research Journal of Pharmaceutical, Biological and Chemical Sciences*.
14. Kar S, Rout S, Pant KS, Sahoo BR. Chapter-9 Guggal (*Commiphora mukul*): A Review. Chief Editor. 2020; 137.
15. Chaudhary GU. Pharmacological properties of *Commiphora wightii* Arn. Bhandari—an overview. *International Journal of Pharmacy and Pharmaceutical Sciences*, 2012; 4(3): 73-5.
16. Bugade D, Khan S. *Vateria Indica* L.: A Review on Morphology, Phytochemistry, and Pharmacological Aspects. *International Research Journal of Modernization in Engineering Technology and Science*, 2023; 4: 557-60.
17. Jk S, Hegde K, Shabaraya AR. A review on Pharmacological activities of *Vateria indica* L. *Int. J. Pharma Chem. Res*, 2018; 4: 5-9.
18. Batiha GE, Wasef L, Teibo JO, Shaheen HM, Zakariya AM, Akinfe OA, Teibo TK, Al-Kuraishy HM, Al-Garbee AI, Alexiou A, Papadakis M. *Commiphora myrrh*: a phytochemical and pharmacological update. *Naunyn-Schmiedeberg's archives of pharmacology*, 2023 Mar; 396(3): 405-20.
19. Yang Y, Sun X, Peng C, Wei J, Yang X. The Genus *Commiphora*: An Overview of Its Traditional Uses, Phytochemistry, Pharmacology, and Quality Control. *Pharmaceuticals*, 2024 Nov 12; 17(11): 1524.
20. Shuaib M, Ali M, Ahamad J, Naquvi KJ, Ahmad MI. Pharmacognosy of *Pinus roxburghii*: a review. *Journal of Pharmacognosy and Phytochemistry*, 2013; 2(1): 262-8.
21. Anonymous, *The Wealth of India. A Dictionary of Indian Raw Materials and Industrial Products*, Raw Materials, CSIR, Publications and Information Directorate (PID), New Delhi, 2003; 8: 64-82.
22. Sindhu RK, Upma KA, Arora S. *Santalum album* linn: a review on morphology, phytochemistry and pharmacological aspects. *International Journal of PharmTech Research*, 2010 Jan; 2(1): 914-9.
23. Atia Sharif HN, Rehman R, Mushtaq A, Rashid UA. Review on bioactive potential of Benzoin resin. *Int. J. Chem. Biochem. Sci*, 2016; 10: 106-10.
24. Bhatia H, Kaur J, Nandi S, Gurnani V, Chowdhury A, Reddy PH, Vashishtha A, Rath B. A review on *Schleichera oleosa*: Pharmacological and environmental aspects. *journal of pharmacy research*, 2013 Jan 1; 6(1): 224-9.
25. Goswami S, Singh RP. Ayurvedic, phytochemical and pharmacological review of *Schleichera oleosa* (Lour.) Oken: a traditional plant with enormous biological activity. *World Journal of Pharmaceutical Research*, 2017 Jul 9; 6(10): 295-309.
26. Pal M, Dhawal A, Sharma R, Upadhyaya P, Srivastava AK, Pandey R, Chaubey MK, Patel S, Vageshwari VS, Rao A, Pandey S. 13. Ethnobotany, Phytochemistry and Pharmacological Activities of *Schleichera oleosa* (Lour.) Oken.
27. Sultana A, Rahman KU, Padmaja AR, Rahman SU. *Boswellia serrata* Roxb. a traditional herb with versatile pharmacological activity: a review. *International Journal of Pharmaceutical Sciences and Research*, 2013 Jun 1; 4(6): 2106.
28. Sharma A, Chhikara S, Ghodekar S, Bhatia S, Kharya M, Gajbhiye V, Mann A, Namdeo A, Mahadik K. Phytochemical and Pharmacological investigations on *Boswellia serrata*. *Pharmacognosy Reviews*, 2009; 3(5): 206.
29. Tošić NG, Nikolić VD, Miljković VM, Nikolić LB. *'Boswellia serrata'*resin isolates: Chemical composition and pharmacological activities. *Advanced Technologies*, 2022; 11(1): 76-87.
30. C.P. Khare, *Canarium strictum* Roxb, *Indian Medicinal Plants: An Illustrated Dictionary*, Springer New York, New York, NY, 2007; pp. 1.
31. J.H. Langenheim, *Biology of amber-producing trees: focus on case studies of hymenaea and Agathis*, amber, resinite, and fossil resins, *Am. Chem. Soc*, 1996; 1–31.
32. Seethapathy GS, Wold CW, Ravikumar K, de Boer HJ, Wangenstein H. *Ethnopharmacology*, biological

- activities and chemical compounds of *Canarium strictum*: An important resin-yielding medicinal tree in India. *Fitoterapia*, 2021 Jul 1; 152: 104920.
33. Muthuswamy R, Senthamarai R. Pharmacognostical studies on stem bark of *Canarium strictum* Roxb. *Phcog J.*, 2014 Jan 1; 6(1): 12-8.
34. Al-Snafi AE. The chemical constituents and pharmacological effects of *Convolvulus arvensis* and *Convolvulus scammonia*-A review. *IOSR Journal of Pharmacy*, 2016; 6(6): 64-75.
35. Arora M and Malhotra M. A review on macroscopical, phytochemical and biological studies on *Convolvulus arvensis* (field bindweed). *Pharmacologyonline*, 2011; 3: 1296-1305.
36. Mehrafarin A, Meighani F, Baghestani MA, Labbafi MR and Mirhadi MJ. Investigation of morphophysiological variation in field bindweed (*Convolvulus arvensis* L.) populations of Karaj, Varamin, and Damavand in Iran. *African Journal of Plant Science*, 2009; 3(4): 64-73.
37. Zahid U, Kazmi MH, Siddiqui JI, Ahmad I. *Saqmonia* (*Convolvulus scammonia* Linn), an important medicinal plant of Unani medicine: A comprehensive review. *Int J Sci Dev Res*, 2020; 5(10).
38. Thombare N, Lohot V, Prasad N & Sharma K, Major gum and resin plants of India: A field guide, (ICAR- Indian Institute of Natural Resins and Gums, Namkum, Ranchi, India., 2018.
39. Omkar K, Suthari S, Alluri S, Ragan A & Raju V S, Diversity of NTFPs and their utilization in Adilabad district of Andhra Pradesh, India, *J Plant Stud*, 2012; 1(1): 33-46.
40. Thombare N, Kumari U, Sakare P, Chowdhury AR, Lohot VD, Prasad N. Indigenous technical knowledge on the medicinal uses of natural resins and gums in India. *Indian Journal of Traditional Knowledge (IJTK)*, 2023 Jun 28; 22(2): 340-9.
41. Patel A, Soni V, Jain SK. Comparative Qualitative And Quantitative Phytochemical Screening Of Hydroalcoholic Extract Of *Gardenia Latifolia* And *Gardenia Resinifera* Leaves And Bark Extracts. *Journal of Advanced Scientific Research*, 2021 Aug 31; 12(03): 281-6.
42. Mahmood C, Daulatabad JD, Mulla GM, Mirajkar AM, Hosamani KM. 7-keto-octadec-cis-11-enoic acid from *Gardenia lucida* seed oil. *Phytochemistry*, 1991 Jan 1; 30(7): 2399-400.
43. Kunert O, Sreekanth G, Babu GS, Rao BV, Radhakishan M, Kumar BR, Saf R, Rao AV, Schühly W. Cycloartane triterpenes from Dikamali, the gum resin of *Gardenia gummifera* and *Gardenia lucida*. *Chemistry & Biodiversity*, 2009 Aug; 6(8): 1185-92.
44. Maurya P, Singh S, Gupta MM, Luqman S. Characterization of bioactive constituents from the gum resin of *Gardenia lucida* and its pharmacological potential. *Biomedicine & Pharmacotherapy*, 2017 Jan 1; 85: 444-56.
45. B. Jhansi Lakshmi, K. Jaganmohanreddy Screening of secondary metabolites in methanolic leaf and bark extracts of *Gardenia resinifera* and *Gardenia latifolia* *Biosci. Biotech. Res. Comm* June, 2011; 4(1): 23-28.
46. G. Sridhar Patwari, A. Rama Narsimha Reddy, A.V.N. Appa Rao and Y. Narsimha Reddy Pharmacological Screening Of Dikamaliartane-A, A Cycloartane Isolated From Gum Resin, Dikamali, Oct - Dec -2011; 2(4).
47. S.K. Sridhar, S. Ramachandran, N. Anbalagan, Leonard J. Thomas, Joanofarc J. Kumar S. Sadish Pharmacological Screening of Dikamali Resin Extract *Natural Product Sciences*, 2003; Mar, 9(1): 10-12
48. B. Jhansi Lakshmi, K. Jaganmohanreddy In vitro Multiple shoot induction directly from Different Explants of *Gardenia resinifera* Roth *Biosciences Biotechnology Research Asia*, June 2013; 10(1): 275-28.
49. K. V Chary, G. Krishna Mohan , M. Sandhya Rani, A. Srivani. I. In-Vitro Assessment Of Antioxidant Activity, Total Phenolic And Flavonoid Content For Various Extracts Of *Gardenia Resinifera* Roth.
50. Hindole SS, Akki K, Attar MS, Suryawanshi SR, Shaikh NS, Zingade SG. Pharmacognostic And Phytochemical Evaluation Of Leaves Of *Gardenia Resinifera* Roth. *IJP.*, 2018; 5(10): 673-7.